

# HELP US DEVELOP AN URBAN FOREST MANAGEMENT STRATEGY

We want to hear from you as we develop the urban forest management strategy. Your input is crucial in setting up a shared vision and priorities for urban forest management.

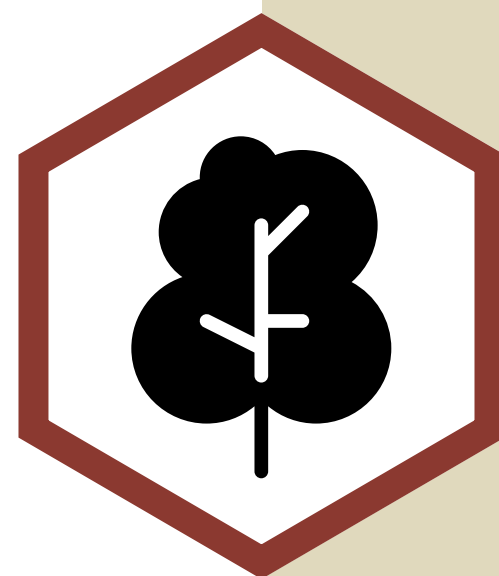
## WHAT IS AN URBAN FOREST MANAGEMENT STRATEGY?

The City of Maple Ridge is developing an Urban Forest Management Strategy to establish a 20-year vision and guidance for urban forest management. It will assess the current urban forest conditions and suggest actions to protect, manage, and grow the urban forest in the face of climate change and urban growth.



### URBAN FOREST

Includes all trees, soils, vegetation, and associated natural processes on public or private land.



### CANOPY COVER

The area covered by tree branches and leaves as seen from above (i.e., bird's eye view).



### ECOSYSTEM SERVICE

Describes the various benefits provided by the urban forest, such as providing shade and improves air quality.

## SHARE YOUR THOUGHTS WITH US!

Please read the display boards and submit your feedback by Oct 10, 2023 via [engage.mapleridge.ca](https://engage.mapleridge.ca)



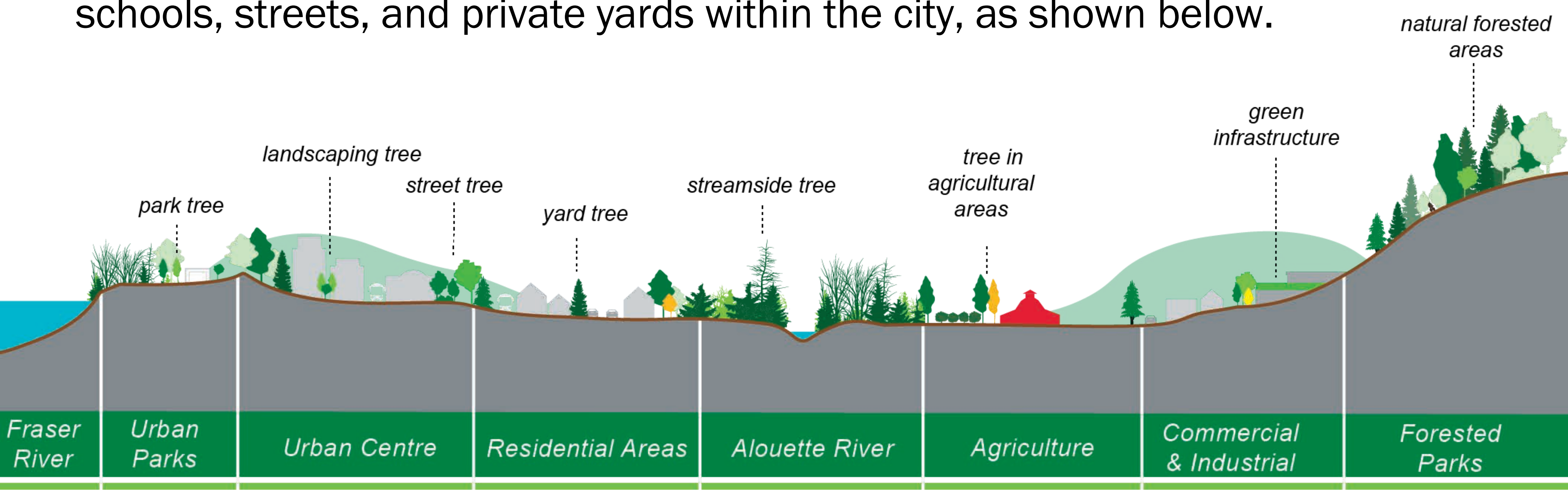


# TREES IN MAPLE RIDGE



## WHAT IS AN URBAN FOREST?

Maple Ridge's urban forest includes all the trees and forests, vegetation, soils, and associated processes in natural areas, agricultural lands, parks, schools, streets, and private yards within the city, as shown below.



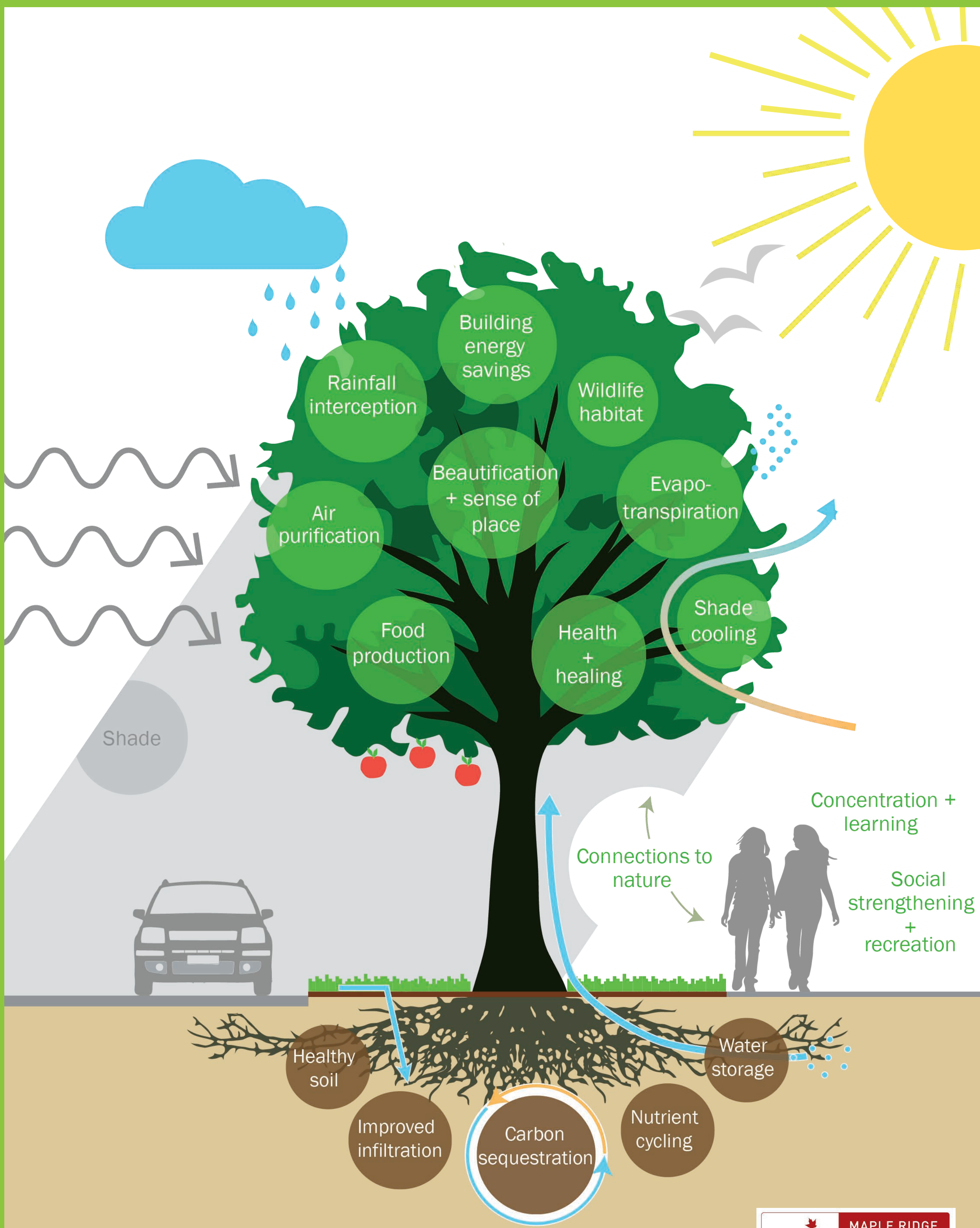
### Trees benefit us all

Maple Ridge's urban forest is significant to the community's character and value.

Trees are living assets, contributing to the quality of life by cleaning the air and water, shading and cooling streets and buildings, stabilizing slopes, and providing high-quality recreation opportunities.

Trees improve overall physical and mental health and connect us with nature.

Trees, forests and greenspaces contribute to Maple Ridge's economy by attracting residents and tourists and stimulating spending and supporting local businesses.





# WHAT CHALLENGES DOES OUR URBAN FOREST FACE?

While the urban forest helps Maple Ridge reduce and adapt to the effects of climate change, trees are vulnerable to changes in climate such as extreme heat and drought. Population growth and development also create challenging conditions for trees to grow and thrive.



## CLIMATE CHANGE

- More and longer droughts
- Hotter summer and more extreme heat events
- Increased fire risk
- More frequent flooding and storm events

## URBANIZATION

- Smaller and hotter growing environments
- Altered water flows on developed sites
- More forest edges created that require maintenance and risk management
- Removal of trees to make space for development



## DATA AND RESOURCES

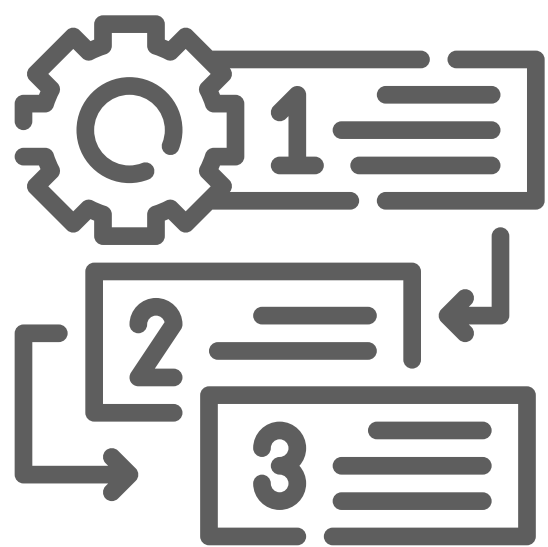
- Out-of-date tree inventory data
- Limited capacity with an increasing demand for planting and maintenance
- Higher costs to plant, establish and maintain trees in urban areas



# WHAT WILL THE STRATEGY DO?

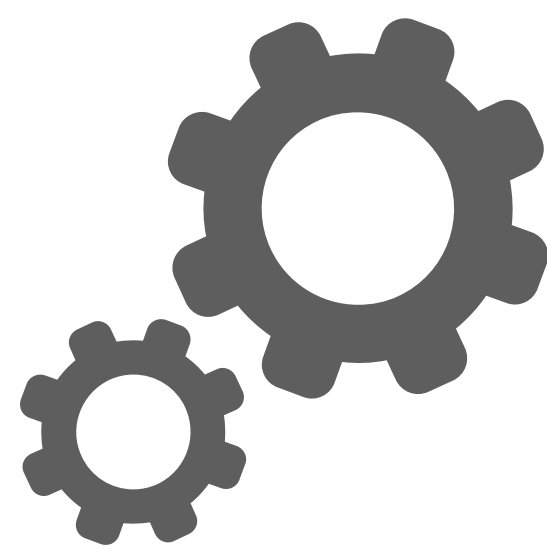
The intent of this work is to provide a vision, goals, recommendations and actions to protect, manage, and grow Maple Ridge's urban forest in the face of urban growth and climate change.

## THE STRATEGY WILL BE BUILT AROUND FIVE THEMES



### PLAN

for a community-centered urban forest with long-term benefits



### MANAGE

trees to optimize their benefits and minimize their risks



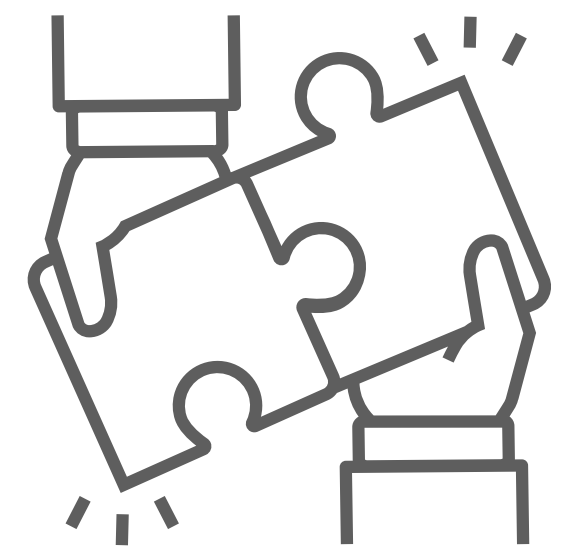
### GROW

trees to improve community's access to benefits



### PROTECT

trees whenever possible while accommodating planned urban growth



### PARTNER

with community members and organizations to implement the Strategy

## TIMELINE

Summer - Fall 2023

Background  
research +  
urban forest  
mapping

Fall - Winter 2023

Strategy  
drafting

Spring 2024

Finalization of  
Strategy

Fall 2023

**Engagement 1:**  
vision + values

Winter 2024

**Engagement 2:**  
feedback on draft  
Strategy



Where we are right now

## SHARE YOUR THOUGHTS WITH US!

Please tell us how you would like to prioritize urban forest management for the next 20 years. Please provide your input by:



**Taking  
the  
Survey**



**Visiting the  
Project  
Page**



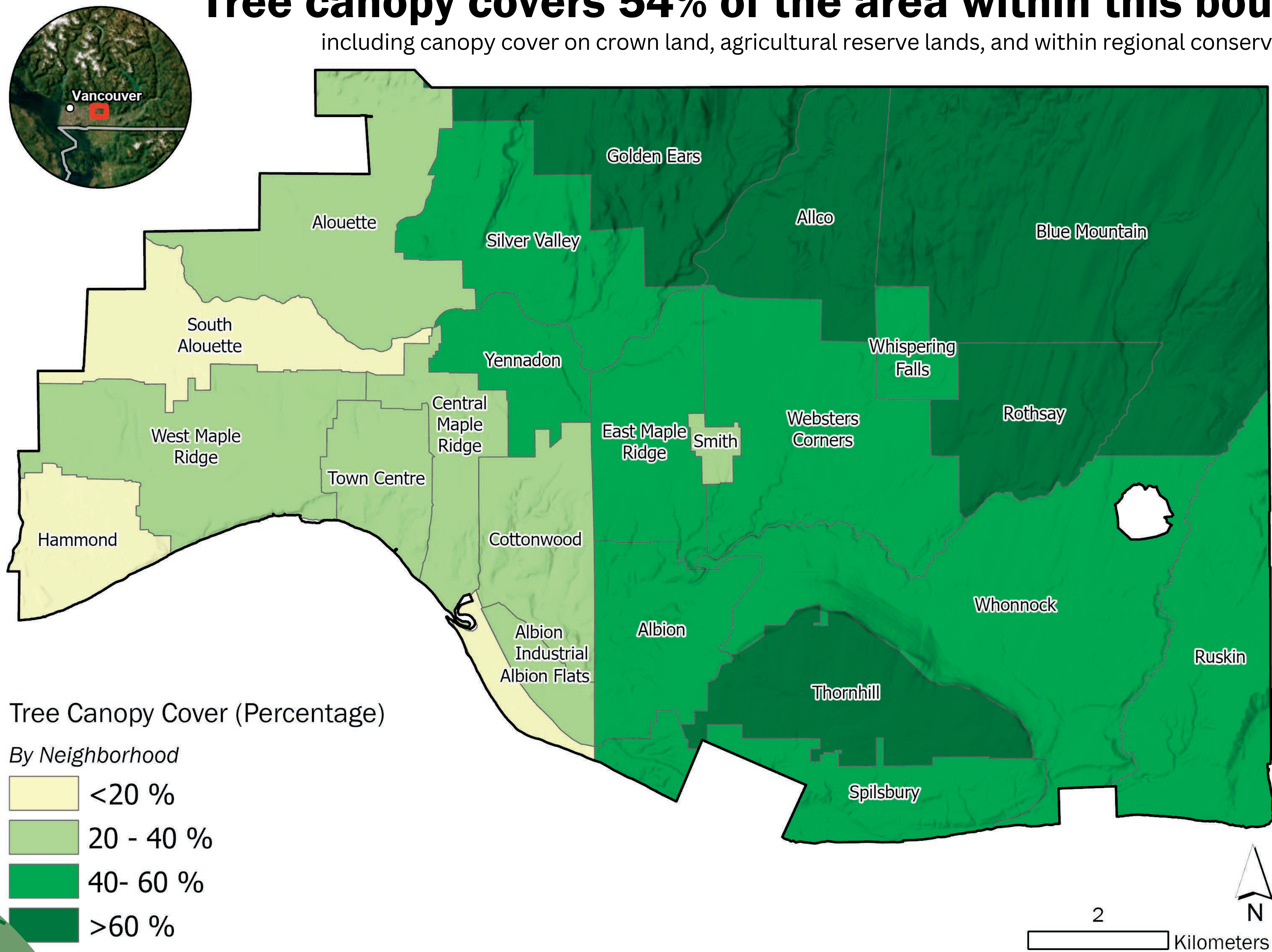
**Submitting  
Places**



# WHAT DO WE KNOW ABOUT OUR URBAN FOREST?

## Tree canopy covers 54% of the area within this boundary

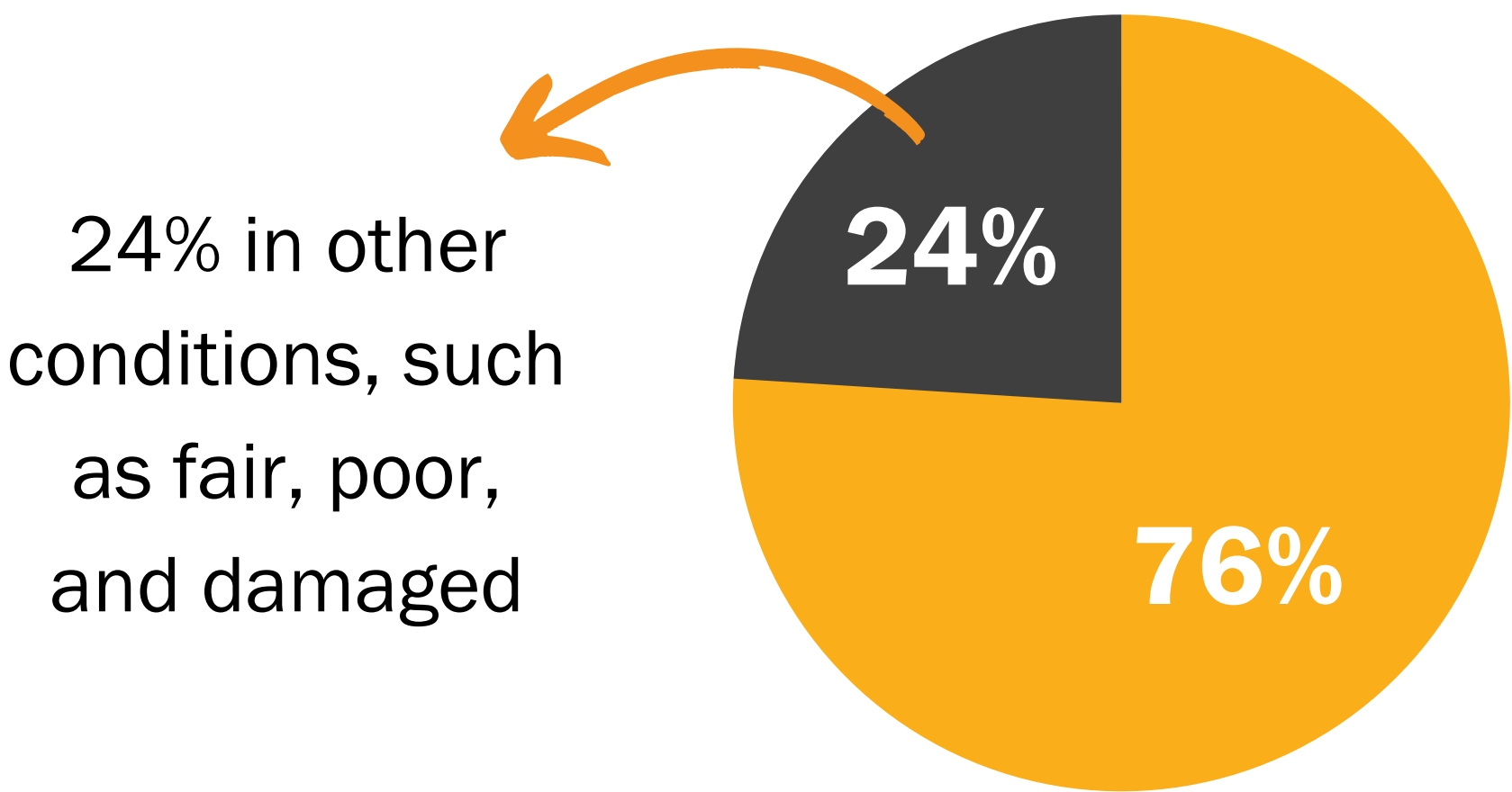
including canopy cover on crown land, agricultural reserve lands, and within regional conservation areas



## Key Facts

- ▶ Maple Ridge manages 1,200 ha of tree canopy within the map boundary. The canopy cover of City-owned land is 49%.
- ▶ Tree canopy cover varies by neighbourhood, with the highest canopy (85%) in Blue Mountain and the lowest canopy (15%) in South Alouette and Hammond.
- ▶ The City manages an inventory of 14,303 street trees. Most common types are: maple (34%), cherry (12%) and sweet gum (9%).

## Among trees with condition rating, 76% of street trees are in good condition



## The most common species are:



Red Maple



Sweet Gum



Kwanzan Cherry



# HELP US DEVELOP AN URBAN FOREST MANAGEMENT STRATEGY

## Open Houses

September

23

### Haney Farmers' Market

9am - 2pm

Memorial Peace Park | In-person

September

27

### National Tree Planting Day

3pm - 5pm

Maple Ridge Park | In-person

October

05

### Albion Community Centre

4pm - 7pm

Albion Community Centre | In-person

## Survey



Let us know what you want to see in Maple Ridge's urban forest | Online

## Mapping Tool



Share urban forest locations that you value and locations that need improvement | Online

## Draft Strategy Feedback

Spring 2024

### More information to come!

This is when the draft Urban Forest Management Strategy will be ready and will need your input.



Subscribe to the Engage Maple Ridge for the latest updates!